

QH
1
B4X
NH

PROCEEDINGS
OF THE
BIOLOGICAL SOCIETY OF WASHINGTON

POTAMOCYPRIS BOWMANI, A NEW FRESHWATER
OSTRACOD FROM WASHINGTON, D.C.¹

BY EDWARD FERGUSON, JR.
Lincoln University of Missouri, Jefferson City

A new species of freshwater ostracod from the vicinity of Washington, D.C., is described. *Potamocypris bowmani*, new species brings to 10 the number of species of the genus *Potamocypris* recorded from North America.

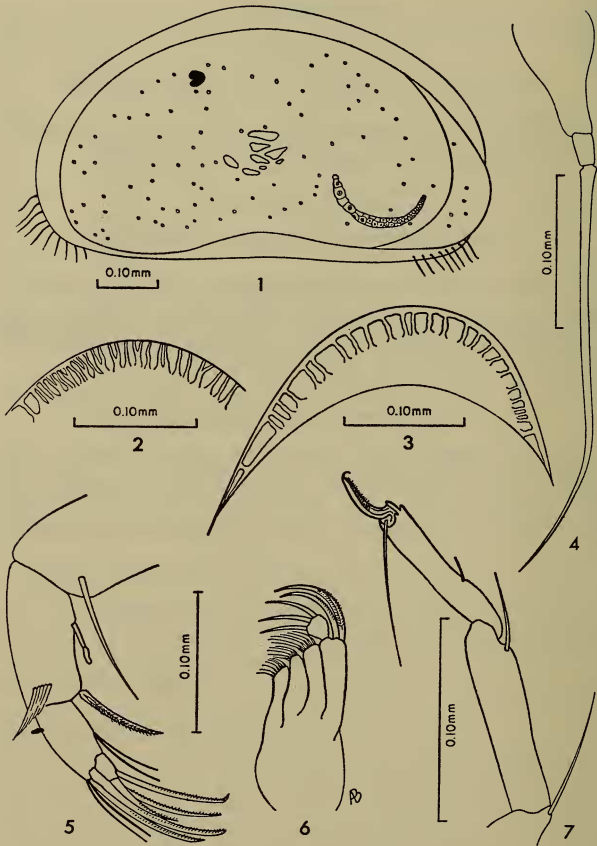
Genus *Potamocypris* Brady, 1870

Cyprid ostracods with compressed valves; natatory setae usually well developed, but frequently few in number and not reaching tips of claws. Furcal ramus reduced to a flagellum. Ultimate podomere of maxillary palp broadened distally.

KEY TO THE KNOWN SPECIES OF *Potamocypris* FROM NORTH AMERICA

- 1. Maximum length of valves of female greater than 0.55 mm 3
- 1'. Maximum length of valves of female 0.55 mm 2
- 2. Valves with two dark-green dorsolateral stripes
..... *P. elegantula* Furtos, 1933
- 2'. Valves without dorsolateral dark-green stripes
..... *P. variegata* (Brady and Norman, 1889)
- 3. Maximum length of valves of female 0.56-0.68 mm 7
- 3'. Maximum length of valves of female greater than 0.68 mm 4
- 4. Length of valves of female 0.70-0.71 mm 5
- 4'. Length of valves of female greater than 0.71 mm 6
- 5. Flagellum of furca with length twice that of base
..... *P. hyboforma* Dobbin, 1941
- 5'. Flagellum of furca with length three times that of base
..... *P. pallida* Alm, 1914
- 6. Maximum length of valves 0.77 mm; color light brown with
scattered patches of green near middle *P. bowmani*, new species
- 6'. Maximum length of valves 0.81 mm; color green with concentra-

¹ This study was supported by National Science Foundation Grant GB-5553.



FIGS. 1-7. *Potamocypris bowmani*. 1, Lateral view from left side of female holotype. 2, Radial pore canals from anterior margin of female paratype. 3, Pore canals along posterior margin of valve of female paratype. 4, furca of female paratype. 5, Second antenna of female paratype. 6, Maxilla and maxillary palp of female paratype. 7, Third thoracic appendage of female paratype.

- tion of pigment in ocular region
 *P. saskatchewanensis* Ferguson, 1959
7. Natatory setae of antennae greatly reduced, not reaching tips of
 claws 8
- 7'. Natatory setae extend beyond tips of claws 9
8. Length of valves 0.56 mm *P. illinoisensis* Hoff, 1943
- 8'. Length of valves 0.68 mm *P. comosa* Furtos, 1933
9. Right and left valves of approximately equal length
 *P. islandgrandensis* Hoff, 1943
- 9'. Left valve distinctly longer than right
 *P. smaragdina* (Vávra, 1891)

***Potamocypris bowmani* new species**

(Figs. 1-7)

Female: Eye prominent. Valves compressed; dorsum broadly and uniformly arched, sloping gently anteriorly and posteriorly; ventral margin of left valve with a distinct sinuation, ventral margin of right valve almost straight; anterior and posterior margins rounded, anterior more broadly so; anteroventral margin with nine or 10 long hairs, posteroventral margin with eight hairs; margins of valves except dorsally with radial pore canals; surface of valve with numerous puncta, but without other ornamentation; right valve overlaps left; length of right valve 0.77 mm, height 0.42 mm; length of left valve 0.74 mm, height 0.34 mm; color of valves light brown with scattered patches of green near middle of valve. Natatory setae of antenna poorly developed, not reaching tips of claws; claws pectinated. Spines of maxillary processes smooth; proximal podomere of palp with a length three and one-half times that of terminal podomere and having denticles on spines; ultimate podomere triangular, broadened distally. Ultimate podomere of third thoracic appendage with a long reflexed seta and a short, curved pectinated one. Furca having a long tapering flagellum separated from broad base, flagellum with a length three times that of base; dorsal seta appears to be absent.

Male: Unknown.

Type-locality: *Potamocypris bowmani* was collected from a small spring in Rock Creek Park, Washington, D.C., by Dr. Thomas E. Bowman of the United States National Museum.

Type-specimens: An unstained microscopic mount of the female holotype, USNM catalogue no. 119638, a stained microscopic mount of a female paratype, USNM cat. no. 119639, and two unstained female paratypes, USNM cat. nos. 119641 and 119642 respectively, are deposited in the United States National Museum.

Remarks: The new species is named in honor of Dr. Thomas E. Bowman. In size *P. bowmani* comes within the range of *P. saskatchewanensis* Ferguson, 1959, but differs from the latter in the absence of the strong,

backwardly directed spines covering the surface of the valves; the valves of the new species are light brown, those of *P. saskatchewanensis* are green with a heavy concentration of pigment in the ocular region. *P. bowmani* differs from all other North American species of the genus in the apparent absence of the dorsal seta of the furca.

LITERATURE CITED

- FERGUSON, EDWARD JR. 1959. The ostracod genus *Potamocypris* with the description of a new species. *Proc. Biol. Soc. Wash.*, 72: 133-138.

Explanation of figures: All drawings, except Figs. 2 and 3, were made from unstained specimens mounted in glycerin and prepared by Louis S. Kornicker of the United States National Museum. Figs. 2 and 3 were made from a specimen stained with a 1% alcoholic solution of eosin Y and mounted in Canada balsam.